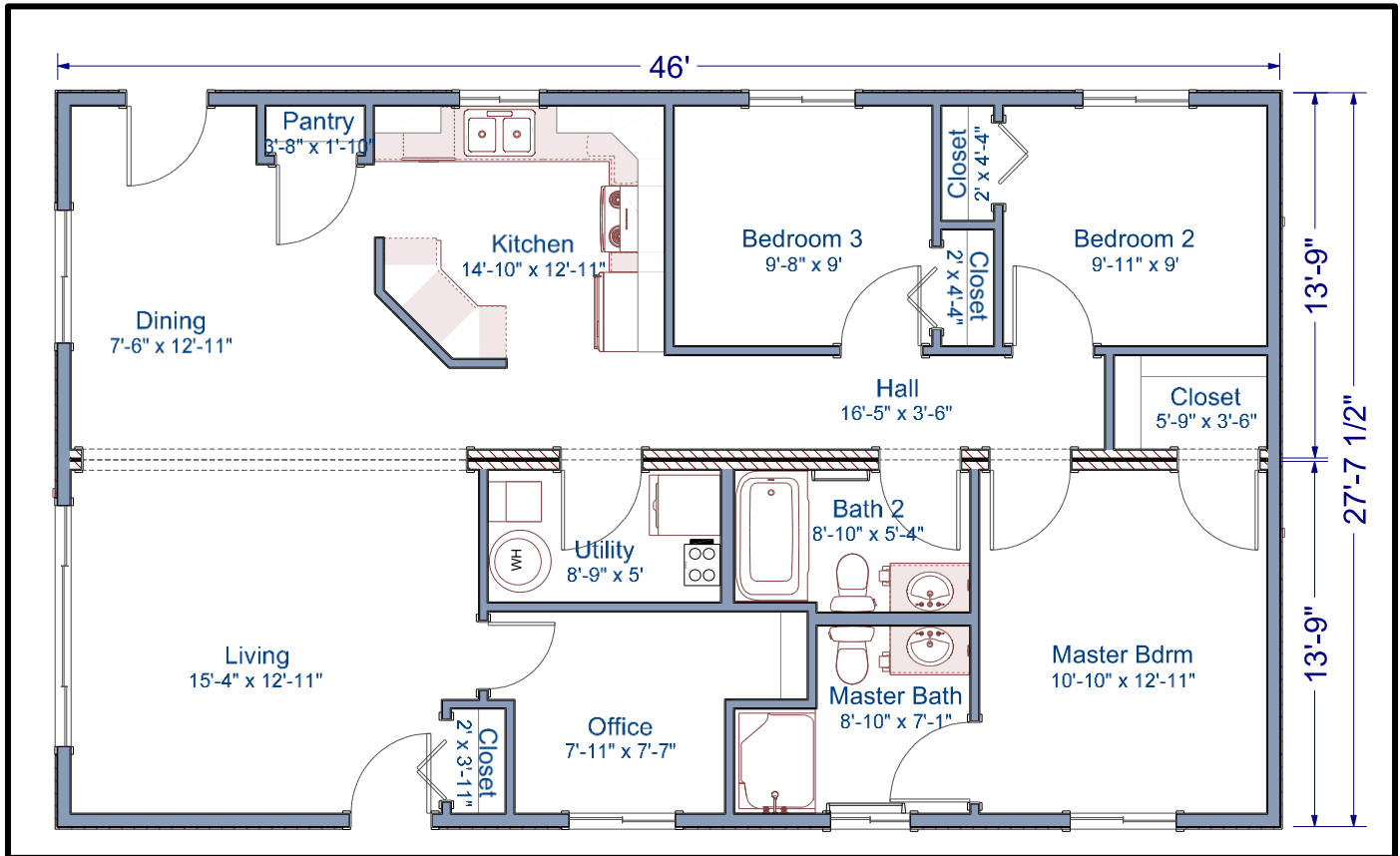


1,271 sq. ft.
28'x46' Ranch
3 Bed/2 Bath

Sky View Floor Plan



The Sky View modular home is an open concept plan that boasts a large living area. The office is a great asset for those who work from home. This 1,271 square foot home is the perfect home for your family.

Contact our Sales Office for more information



Not in Contract: land, site preparation, foundation, garages, decks, stairs, railings, appliances, insulation under main floor, waste plumbing under main floor. *Floor plans and/or elevations may show optional features.*

TLC Modular Homes

www.tlcmodularhomes.com • 509-773-5055 •
1600 S. Roosevelt • Goldendale, WA 98620 •

Washington: WESTCC*01218 Electric WESTCAC002R0; Oregon: 149296