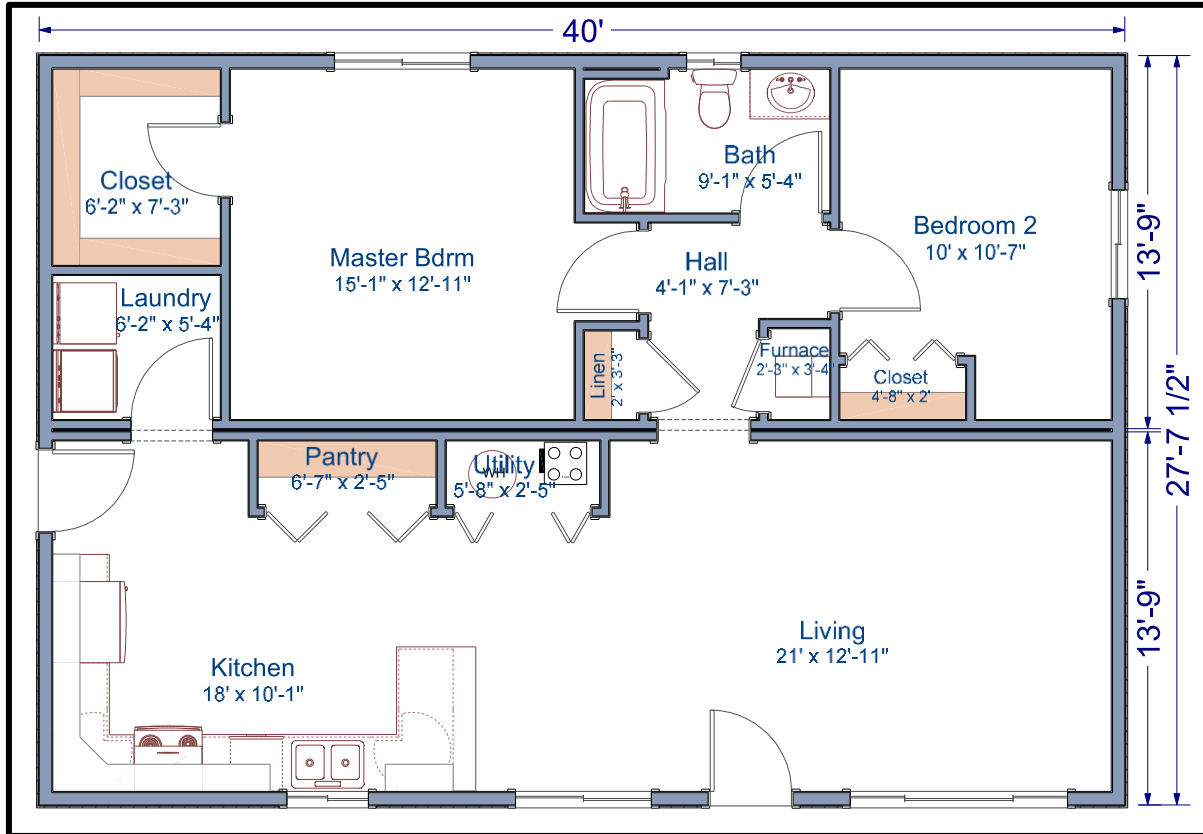


1,105 sq. ft.
28'x40' Ranch
2 Bed/1 Bath

Lewis Floor Plan



The Lewis modular home is an open concept plan that boasts a large living area. This 2-bedroom home has all the amenities you need. This 1,105 square foot home is small in size but mighty in functionality.

Contact our Sales Office for more information



Not in Contract: land, site preparation, foundation, garages, decks, stairs, railings, appliances, insulation under main floor, waste plumbing under main floor. *Floor plans and/or elevations may show optional features.*

TLC Modular Homes

www.tlcmodularhomes.com • 509-773-5055 •

1600 S. Roosevelt • Goldendale, WA 98620 •

Washington: WESTCC*01218 Electric WESTCAC002R0; Oregon: 149296