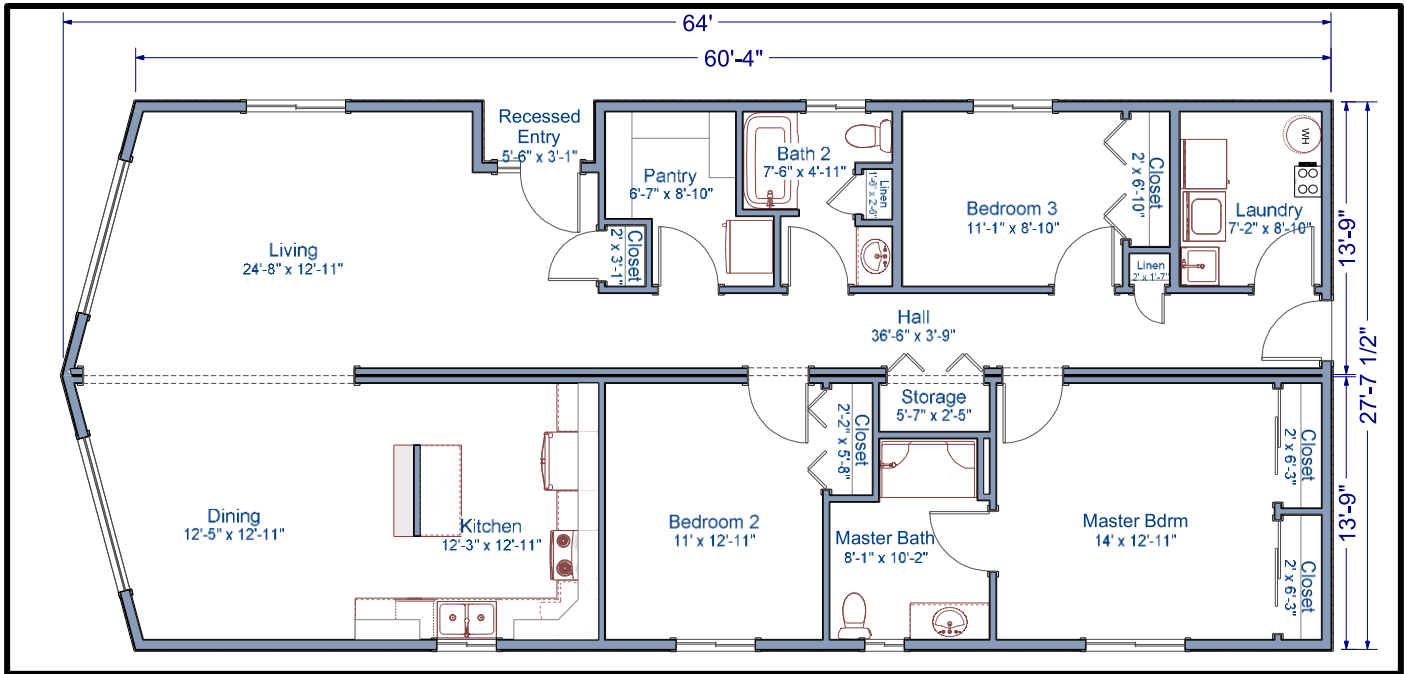


**1,700 sq. ft.**  
**28'x64' Ranch**  
**3 Bed/2 Bath**

## **TLC Centennial II Floor Plan**



The TLC Centennial II modular home is an open concept plan that boasts a large living area. The prow front is a wonderful feature for those views. This 1,700 square foot home is the perfect home for the growing family.

Contact our Sales Office for more information



**Not in Contract:** land, site preparation, foundation, garages, decks, stairs, railings, appliances, insulation under main floor, waste plumbing under main floor. *Floor plans and/or elevations may show optional features.*

## ***TLC Modular Homes***

[www.tlcmodularhomes.com](http://www.tlcmodularhomes.com) • 509-773-5055 •

1600 S. Roosevelt • Goldendale, WA 98620 •

Washington: WESTCC\*01218 Electric WESTCAC002R0; Oregon: 149296