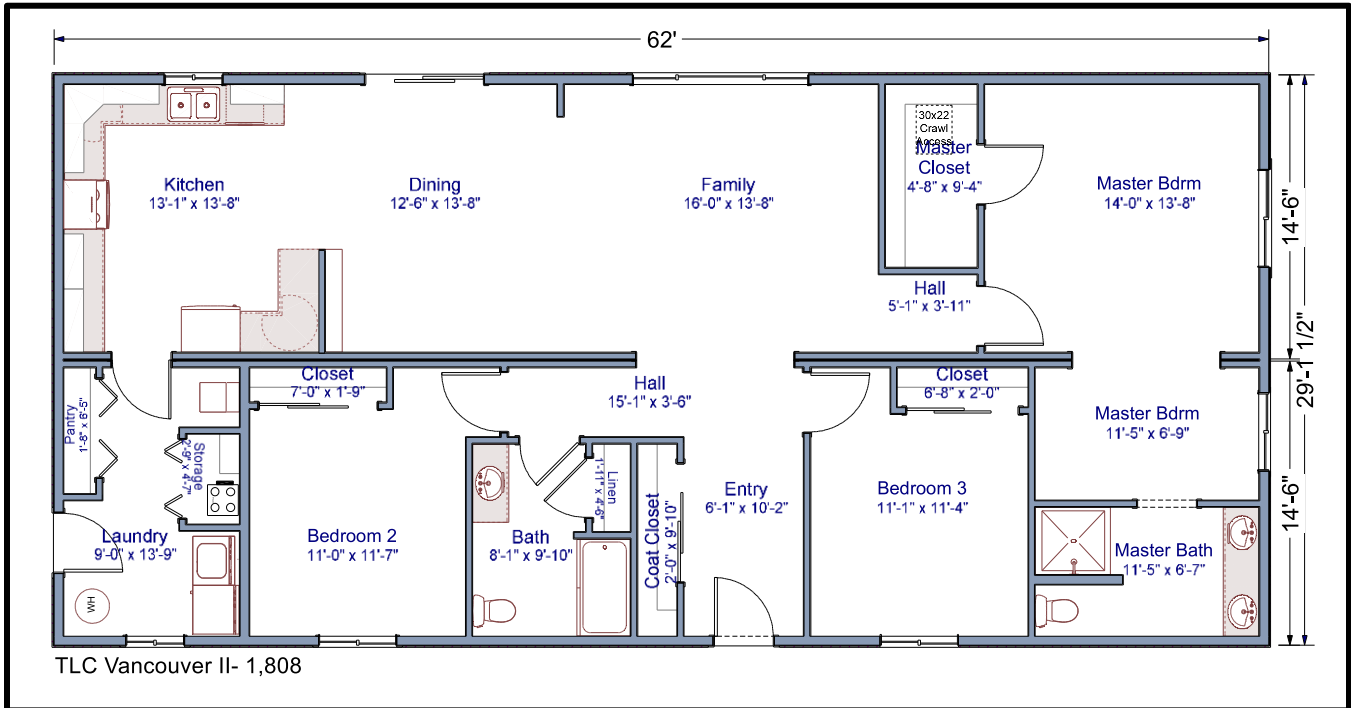


1,806 sq. ft.
29'x62' Ranch
3 Bed/ 2 Bath

Vancouver II Floor Plan



The Vancouver II modular home is an open concept plan that boasts a large living area. This 1,806 square foot home is very functional for the busy family.

Contact our Sales Office for more information



Not in Contract: land, site preparation, foundation, garages, decks, stairs, railings, appliances, insulation under main floor, waste plumbing under main floor. *Floor plans and/or elevations may show optional features.*

TLC Modular Homes
www.tlcmodularhomes.com • 509-773-5055 •
1600 S. Roosevelt • Goldendale, WA 98620 •
Washington: WESTCC*01218 Electric WESTCAC002R0; Oregon: 149296