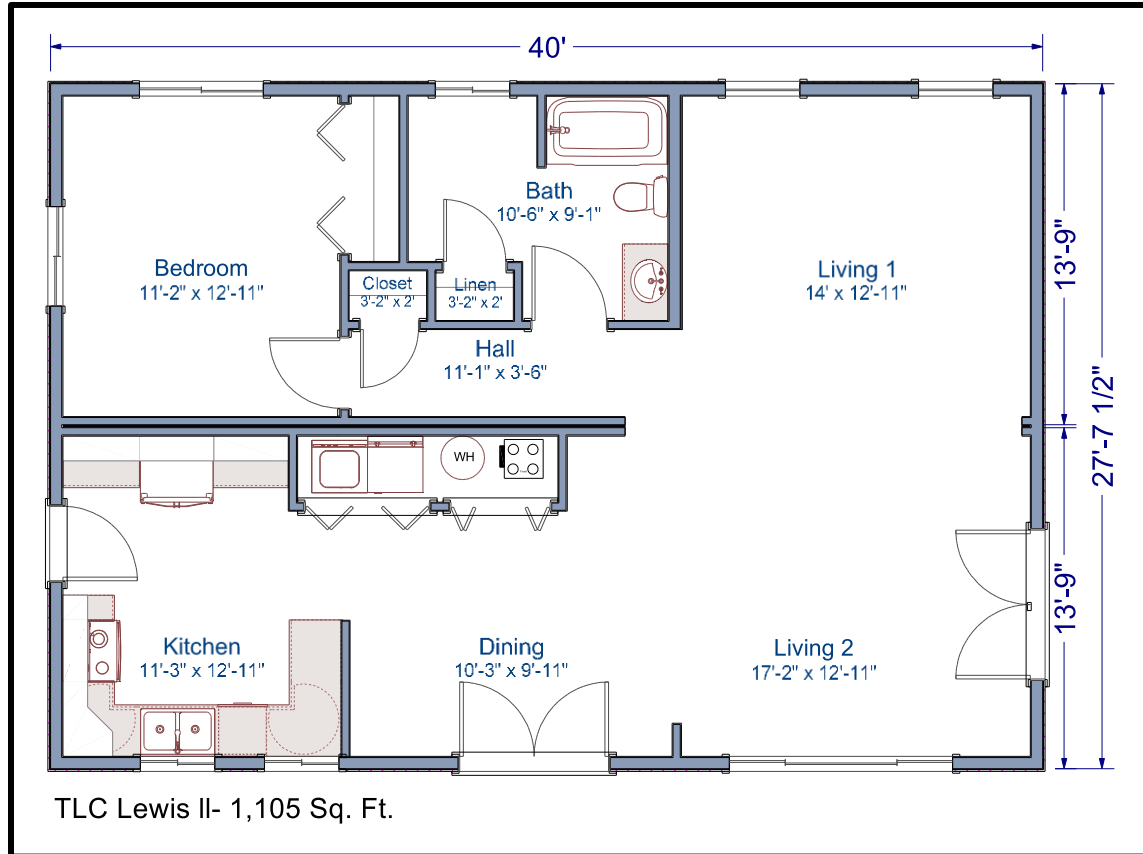


**1,105 sq. ft.**  
**28'x40' Ranch**  
**1 Bed/1 Bath**

## Lewis II Floor Plan



The Lewis II modular home is an open concept plan. This one bedroom may be small in size but large in living area. This 1,105 square foot home is the perfect home for someone wanting a small home with lots of room.

Contact our Sales Office for more information



**Not in Contract:** land, site preparation, foundation, garages, decks, stairs, railings, appliances, insulation under main floor, waste plumbing under main floor. *Floor plans and/or elevations may show optional features.*

## ***TLC Modular Homes***

[www.tlcmodularhomes.com](http://www.tlcmodularhomes.com) • 509-773-5055 •  
1600 S. Roosevelt • Goldendale, WA 98620 •  
Washington: WESTCC\*01218 Electric WESTCAC002R0; Oregon: 149296